

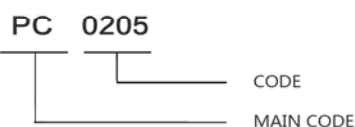
## Description

Barring gear is electric motor with gear. When barring gear is working, it gears with diesel engine output gear. Start-up is interlocked of barring gear and diesel engine. Diesel engine do not start operation with barring gear. Crankshaft can revolve slowly. Then you can find some early warning to confirm diesel engine can work or not.

Barring gear is consist of electric motor, gear reducer, workbench, interlock arrangement, turning gear wheel, electric cabinet and remote control joystick.



## Product Model

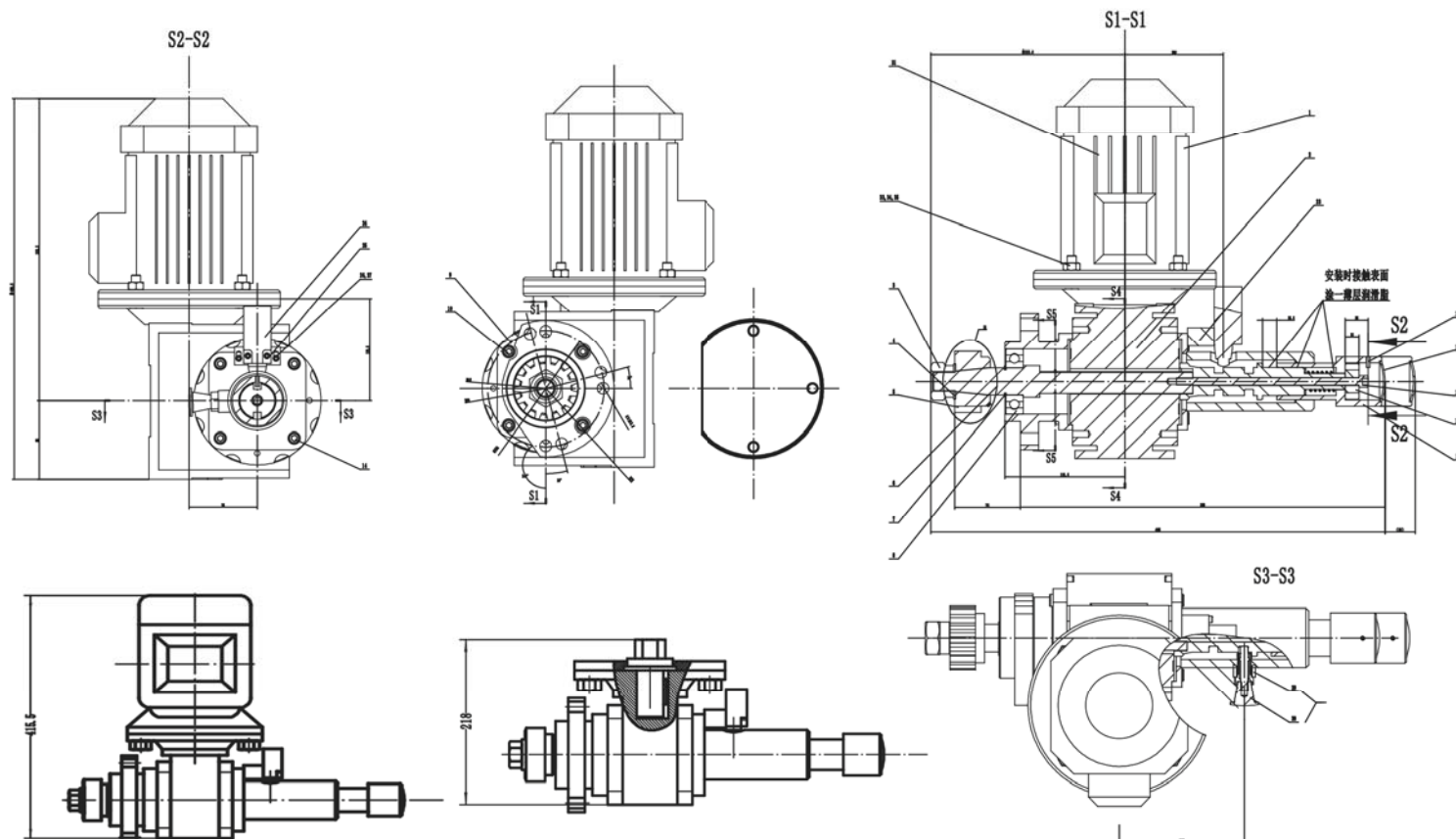


0205	X11.02600-0205 ( 3x400V 0.55KW )
0255	X11.02600-0255 ( 3x440V 0.55KW )
0256	X11.02600-0256 ( 3x480V 0.63KW )
0126	X11.02600-0126 ( 3x690V 0.55KW )
0206	X11.02600-0206 ( 气动 6 bar )
0242	X11.02600-0242 ( 手动 )

## Products Features

- Adopt ABB motor and reducer and obtain quality assurance
- Provide customization design for customers

## Product Outline Example



## Performance

- Anqing CSSC Diesel Engine Co. Ltd
- Shanxi Diesel Engine Heavy Industry Co.,Ltd.
- Chongqing Push mechanism co., ltd.
- 中船动力有限公司
- CNPC JICHAI POWER EQUIPMENT COMPANY

More Information,  
Please Scan Qr Code

